

audlem

music & arts

FESTIVAL

programme

26-29 MAY

2023



Cheshire  
East Crowd

*Bringing your ideas to life*

## Hello and welcome to the 2023 Audlem Music & Arts Festival!

**We are absolutely thrilled** to be able to bring this much loved event back to its rightful home in the centre of Audlem.

There is a truly fantastic feast of **live music** for you over four days across three performance venues, additionally we have a **makers' market & art exhibition** for you to enjoy at **The Public Hall**, so please do pay them a visit.

We will also be using **Audlem Methodist Church** as our third performance venue, a fantastic space for live music!

As always, this is a free-to-attend event, and is financially supported by two fantastic pubs, **The Bridge Inn** and **The Shroppie Fly**, along with **Cheshire East Crowd** and **Spacehiv**, a Cheshire East Council initiative that helps fund local groups working to make a difference in their communities.

We also receive vital financial support from local businesses who place adverts in this very programme, and we would like to **sincerely thank everyone** who has helped us along the way, we simply could not do this without your kind support.

This year, we will be asking you to help us raise money for Nantwich Food Bank. There will be 2 collections each day, so please, if you have any spare change, it would really make a difference to those who are struggling right now, **thank you**.

**We hope that you all have an epic Bank Holiday Weekend!**

**The Audlem Music & Arts Festival Team.**

If you would like to keep up-to-date with other events we will be holding throughout the year, please give this handy QR code a quick scan with your phone camera and follow the link.



## ACKNOWLEDGEMENTS

### The Festival Team

**Music and Planning:-** David Scott & Jody Jennings

**Arts Curator:-** Emily Hardy & Jarad Southall-Martin

**Fundraising Team:-** Steve Walker, Joe Welch, Elliot Wollaston, Adele Dudley, Linda Barnes, Shirleeann Southall-Martin, Eden Southall-Martin, Claire Scott, Tim Dudley, Ben Dudley

**Advisors:-** Ralph Warburton, Pete Marshall, Julian Harrison

**Major Sponsors:-** Cheshire East Council, The Bridge Inn, The Shroppie Fly



Friendly one-to-one Personal Training Service  
and Group Classes



Sarah 07753 337626



sarahslater501@hotmail.co.uk



SB Fitness

# Vdub Campervan

## Sales / Conversions



**Auto  
Trader**

**Location:- Cheshire**

**[www.vdubcampervan.co.uk](http://www.vdubcampervan.co.uk)**

**tel: 01270 811082 / 07946 870465**



**NUMBER 11, THE COURTYARD  
CHESHIRE STREET, AUDLEM  
01270 421 152**



# THE SHROPPIE FLY

Proud to be a Main Sponsor of the  
Audlem Music & Arts Festival

Great home cooked food served  
7 days a week

Wide selection of Cask Ales

Always a warm welcome

Regular Live Music

Audlem Wharf, Audlem, Cheshire CW3 0DX  
Telephone 01270 421396



The number one village venue for all your events and activities is proud to be part of the Audlem Music Festival 2023



The Public Hall has a variety of rooms and spaces available for functions, celebrations and activities.

Fully equipped kitchen and professional bar facilities.

Incentives may be available for community group bookings

For further information contact  
Lorna Matthews:  
07361 826143





 **36,960**

Last year, we provided 36, 960 meals to local people in need

 **34 A WEEK**

Last year, we supported an average of 34 people a week

 **40%**

40% of the people we supported last year were children

**Our mission** at Nantwich Food Bank is to assist those most in need, and to help prevent or relieve food poverty in Nantwich and the surrounding areas.

We provide emergency food packages- usually enough to last 7 days- to individuals and families in need. We are a short-term solution but can provide long term support where necessary. We are working hard with our referral partners to strategically reduce the need for our services.

In the last year we helped 2,001 people, of which 800 were children. This is an increase of 9.2% on the year before. We distributed 45 tons of food which also benefitted other local Trussell Trust food banks who needed additional supplies. That 45 tons of food is equivalent to around 38,000 meals.

We are run almost entirely on volunteers, we have our amazing storeroom managers Damien & Emily that keep the operation running efficiently along with our 50+ regular volunteers. We couldn't be more thankful for the generosity of the local people, businesses and regular donors that allow us to continue doing the great work that we do.

We would like to personally thank the organisers of Audlem Music & Arts Festival for choosing to support us this year.



[www.nantwich.foodbank.org.uk](http://www.nantwich.foodbank.org.uk)

## Award Winning Sustainable Lifestyle Stores in Whitchurch

check out our website  
[www.mooandboom.com](http://www.mooandboom.com)

Ladies, Menswear, Gifting, Beauty, Jewellery, Home decor, as well as a Cafe' with Vegan and Gluten Free menu



10 Green End and High Street, Whitchurch, SY131AA, Tel: 07741 602669



East Midlands Solutions  
EMS Cheshire

Quality assured design and build  
from concept to completion.

Julian Rowbottom

✉ [Jay@eastmidlandssolutions.com](mailto:Jay@eastmidlandssolutions.com)

07812916564



NEW TO

# Bradeley Green



OPEN 7 DAYS  
A WEEK  
9:30AM – 3:30PM

## THE SHEEP SHED

CAFÉ | FARM SHOP | EVENTS

ENJOY SPECIALIST COFFEE, BREAKFAST,  
BRUNCH, LUNCH & MORE...





SCAN ME

FOR MENU  
& MORE  
INFORMATION

- DOG FRIENDLY
- FREE PARKING
- ACCESSIBLE ENTRANCE
- EVENT SPACE FOR HIRE

“Very warm and welcoming, great food, staff were lovely. Would highly recommend, and I will be back for another visit.” – V Griffiths ★★★★★

[www.bradeleygreen.co.uk](http://www.bradeleygreen.co.uk)

Bradeley Green, Whitchurch, SY13 4HD 01948 668100  
(Just off the A49 North of Whitchurch)  

# THE WHITE LION MUSIC FESTIVAL

SATURDAY  
19 AUGUST  
1-10 P.M

LIVE MUSIC THROUGHOUT  
THE DAY

GARDEN GIN & PIMMS BAR

BBQ & STREET FOOD  
POP-UP

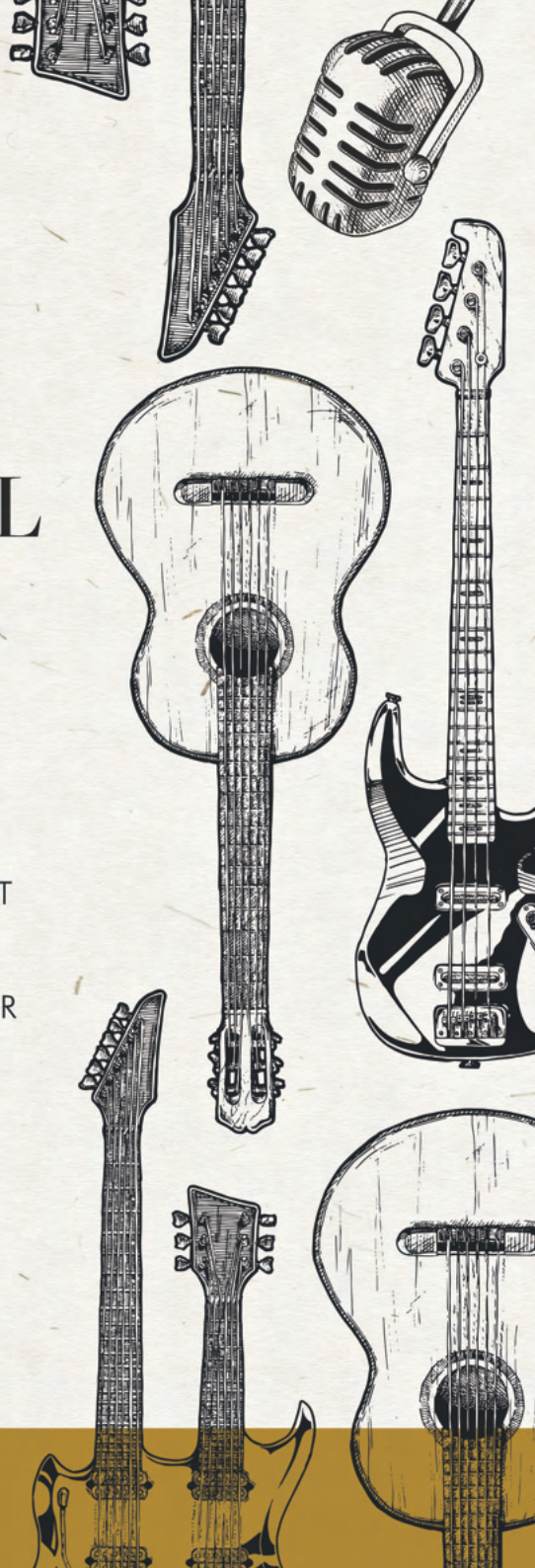
SCAN ME



*Visit our  
events page  
online for all  
the details*

FOLLOW US ONLINE  

[thewhitelionhankelow.co.uk](http://thewhitelionhankelow.co.uk)



# AT-A-GLANCE FESTIVAL GUIDE

## BRIDGE STAGE

### FRIDAY

The Anticool 8.30pm

### SATURDAY

Blue Raccoon 12.30pm  
Greg Murray Band 2pm  
Indie Anna Tones 3.50pm  
Gambler 6pm  
James McGrath 8.30pm

### SUNDAY

Paul Larcombe 1pm  
Truly Ford 2.30pm  
Oli Ng 4.30pm  
Vavoom! 6.30pm  
Slug 8.30pm

### MONDAY

Callum Wright 12.30pm  
Lydia O'Dowd Band 2pm  
Jim Kirkpatrick Band 3.50pm  
SkaBurst 6pm  
Twin Frets 8.30pm

## SHROPPIE STAGE

### FRIDAY

Jody Jennings 8.30pm

### SATURDAY

Myria 1pm  
Amber Lite 2.30pm  
Muddy Elephant 4.30pm  
Uptown Monotones 6.30pm  
Dave Nettleton 8.30pm

### SUNDAY

The Pluckers 12.30pm  
Acoustic Anarchy 2pm  
Nixon Tate 3.50pm  
Hipster 6.30pm  
Slide Boy Roy 8.30pm

### MONDAY

Grant Sharkey 1pm  
Katie O'Malley 2.30pm  
The Good Habits 4.30pm  
Brass Monkees 6.30pm  
Tony Skeggs 8.30pm

## AUDLEM METHODIST CHURCH STAGE

### FRIDAY

Nastee Chapel 7pm  
(ticketed/POD event)

### SATURDAY

Cake & Keys with  
Alexandra Westcott 2pm

### SUNDAY

Loud Mouth Women 2pm  
Ukes Aloud Performance &  
Workshop 8pm

### MONDAY

Gemma Rose 3.30pm



## PUBLIC HALL ART EXHIBITION AND MAKERS MARKET

Open 10am - 5pm SATURDAY & SUNDAY

**MAKERS:** Applestump Records • Hankelow Honey \* Sunbeam Naturals • Drink or Draw

Wrenbury Cider • Ma Baker Bakes • Bobbins & Bows • Midena • Bourne's Cheese • Nantwich Gin • Copperlode  
Bradwell Bakery • Sarah Elizabeth Anne • Grace Finneren • Katherine Laird • Sylvia Davies Cards

**EXHIBITORS:** Adrian Cope • Craft Chat + Spinning Wheel Demos • Judy Naden • Craig Hitchchen • Emily Hardy  
Loz Sandom • Steph McPhillips • Audlem Art Club • Gig Junkie • Wendy Jordan • Crocs The Vinyl Cut

## FRIDAY 26TH MAY

**Nastee Chapel Audlem Methodist Church 7pm** (*ticketed performance*)

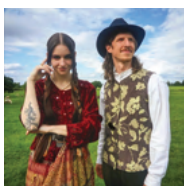
Formed in 2019, the two core members of the band, NatalieGrace and Steve, have brought their love for traditional folk music and poured in ideas from their eclectic musical backgrounds, creating an innovative sound that will tickle the tastebuds of music maestros and casual listeners alike, as they walk the line between virtuoso skill and crowd-pleasing tunes.

**Jody Jennings Shroppie Fly 9pm**

Local musician Jody has been in various covers and original bands since he was a teenager, has a wealth of experience with thousands of gigs under his belt. He has a large and varied repertoire to draw from, which enables him to read the room and play to his audience, wherever that may be. Requests taken!

**The Anticool Bridge Inn 9pm**

'Lethal amounts of Rock/Punk Pop and Indie' is how this trio describe themselves. With two frontmen at the helm, each playing their own instrument, this small outfit certainly do make a big sound, and always like to engage audiences with their great banter.



# SATURDAY 27th MAY



## **Blue Raccoon The Bridge Stage 12.30pm**

This young and enthusiastic 6 piece band from Cheshire have been making waves, playing great songs from the 90's-00's, and their own original compositions influenced by such musical giants as Frank Zappa and Led Zeppelin.



## **Myria The Shroppie Stage 1pm**

A four piece noise-rock band from South Cheshire, Myria absolutely blew us away at the 'Music At The Marina' event held in August 2022, we are very pleased to have them opening the day for us. Taking their influences from the likes of Idles, Sonic Youth, Dinosaur Jnr et al, expect complex soundscapes and driving rhythms from this young but not inexperienced quartet.



## **Greg Murray & The Seven Wonders-Acoustic The Bridge Stage 2pm**

James Gregory Murray & The Seven Wonders fuses the twang of Americana, with Latino, with 'death country', with brash and anthemic choruses, and have uplifted many a festival-goer in their time, having been described as 'Earnest and emotional, heartfelt and awe-inspiring'. Influences include Springsteen, Arcade Fire, The Waterboys and Van Morrison.



## **Alexandra Westcott (Cake & Keys) AMC Stage 2pm**

Alexandra is a professional and accomplished Classical pianist and teacher, and has been playing since the age of 8 years old. Join her at The Audlem Methodist Church for wonderful music, a warm welcome, and some home made light refreshments.



## **Amber Lite The Shroppie Stage 2.30pm**

The Amber Lamps are a man down so have signed up some additional local vocal talent. Performing a mix of Indie Rock and funky originals plus some well chosen covers, this is an act to get you moving, singing along and generally having a really great time!



## **Indie Anna Tones The Bridge Stage 3.50pm**

A return to the festival for the four piece cover band with great energy, fronted by the irrepresible Anna, they put their own stamp on well known songs from Foo Fighters, Queen, The Stereophonics and The White Stripes, among many others. This band will leave you feeling upbeat, fired up and ready to party for the rest of the day!



## **Muddy Elephant The Shroppie Stage 4.30pm**

Muddy Elephant are an Indie rock band made up of 4 friends from Chester, UK. Their music has been played extensively across BBC Introducing, as well as on ITV's This Morning, on match day at Anfield (Liverpool FC) and across CO-OP stores nationwide. Expect uplifting melodies, driving beats, captivating lyrics and mellifluous guitars.



## **Gambler The Bridge Stage 6pm**

Always a firm festival favourite, local boys Gambler return rocking familiar songs that other bands do not dare cover, including Toto, The Who, ZZ Top and U2. A genuine power trio, their consummate musicianship and wonderful three part harmonies create a sound so much bigger than the sum of its parts.



## **Uptown Monotones The Shroppie Stage 6.30pm**

Catchy, upbeat and truly unique, this Austrian trio knows how to get feet stompin' and crowds dancing, serving up musical surprises throughout their performances. verN the FX wizard on vocals, Heli on guitar, vocals and pretty much anything else he can get his hands on (jews harp, harmonica...a balloon?) and Ivory, beatbox champion extraordinaire, their shows are always *joyous*.



BRITISH  
PROPERTY  
AWARDS

2019



GOLD WINNER

ESTATE AGENT  
IN NANTWICH



BRITISH  
PROPERTY  
AWARDS

2020



GOLD WINNER

ESTATE AGENT  
IN NANTWICH



BRITISH  
PROPERTY  
AWARDS

2022



GOLD WINNER

ESTATE AGENT  
IN NANTWICH



BRITISH  
PROPERTY  
AWARDS  
2022



GOLD WINNER

ESTATE AGENT  
IN NANTWICH



BRITISH  
PROPERTY  
AWARDS  
2020



GOLD WINNER

ESTATE AGENT  
IN NANTWICH



BRITISH  
PROPERTY  
AWARDS  
2019



GOLD WINNER

ESTATE AGENT  
IN NANTWICH



AWARDED FOR  
MARKETING | SERVICE | RESULTS

# THERE'S A REASON WE KEEP WINNING AWARDS

Call to find out how we can help you achieve  
the **BEST POSSIBLE PRICE** for your home!

James Du Pavey  
INDEPENDENT ESTATE AGENTS

01270 445678 | [www.jamesdupavey.co.uk](http://www.jamesdupavey.co.uk) | **MULTI AWARD WINNING AGENT**

Blanching Edge

## SATURDAY 27th MAY continued



### **Dave Nettleton The Bridge Inn 8.30pm**

Audlem's own solo folk-blues, dark Americana singer-songwriter has been captivating audiences with his hauntingly beautiful music. Drawing inspiration from Lumineers Colter Wall, Johnny Cash, The Civil Wars, & Billy Bragg, Nettleton's Original music is a perfect blend of modern & classic folk elements, evoking a sound that is both nostalgic and fresh.



### **James McGrath Shroppie Fly 8.30pm**

Hailing from Nenagh in County Tipperary, James is no stranger to Audlem, a place he affectionately calls his second home. Having conquered the Irish Charts on more than one occasion with his captivating songs about life in an Irish town, his live performances are always passionate and engaging, his wit effortlessly charming.

## SUNDAY 28th MAY



### **The Pluckers The Shroppie Stage 12.30pm**

Tony (vocals, acoustic guitar, ukulele, mandolin and harmonica) & Andy (vocals, acoustic guitar and percussion) have been festival circuit regulars for a good few years, performing their own brilliant versions of well loved classics with fantastic banter and humour, this affable duo are always great fun and hugely entertaining.



### **Paul Larcombe & Friends The Bridge Stage 1pm**

Having garnered a well deserved international reputation as a world class Elvis tribute, the infinitely likeable Paul has played all over the globe, but spends a lot of time in Audlem. He will be playing a set of American Country and Blues for us, and will no doubt add some of his charisma and wonderful repartee to his performance, so we are thrilled to have Paul and his friends play for us.



### **Loud Mouth Women AMC Stage 2pm**

Festival favourites are back, bringing songs from around the world in joyous harmony. They are an open access community choir based in Newcastle-Under-Lyme. They have been singing for 24 years, and have sung at Stoke Sings Choir Festival, The Lowry Centre and Sing For Water in Manchester.



### **Acoustic Anarchy Shroppie Stage 2pm**

This rootsy 4 piece from the Staffordshire make their festival debut this year, and take well known songs and truly make them their own. With strong female vocals, edgy guitar, punchy bass and solid drums, they have bags of energy and play something for everyone, so will no doubt be a highlight of the weekend.



### **Truly Ford Bridge Stage 2.30pm**

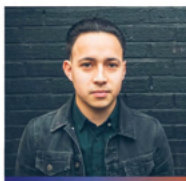
Songwriter Truly Ford wrote her first song age 10 with influences including Florence Against The Machine & Alanis Morissette. At 16, Truly would play to anyone who'd listen. Her fire for success saw her travel across the world. In 2017, she appeared on The Voice, making the semi-finals. Her career appeared to be a success but her mental health was crumbling. After years of working on herself, Truly's now an artist who fearlessly writes songs that speak her truth.



### **Nixon Tate Shroppie Stage 3.50pm**

'I write songs, I record songs, I sing songs to people...I then repeat the process...' is how the diligent singer-songwriter from Stoke describes himself. Nixon, along with his 5 piece band, are attracting all the right kind of attention with their rousing Northern Alt-rock. Definitely a band worth checking out if you like your music full of vigour, poetry and passion.

## SUNDAY 28th MAY continued



### **Oli Ng Bridge Stage 4.30pm**

A festival regular, Crewe based singer-songwriter Oli and his band have played all over the UK and Europe, recently touring his latest 10 track album 'Everything Is Impossible Until It Happens'. His songs have been said to give a life-affirming, honest and positive take on the great challenges of life, and Oli always gives us a great show whenever he plays at the festival.



### **Hipster Shroppie Stage 6pm**

This slick and versatile quartet have a few thousand gigs under their belts, and have played everywhere from living rooms to football stadiums. This is their second appearance at the festival, and we fully expect another set of classic, high energy songs to get the place jumping. Bring your dancing shoes!



### **Vavoom! Bridge Stage 6.30pm**

The Crewe based rip-roaring three piece Rockabilly/Rock'n'Roll band make a welcome return to this years proceedings, featuring Andy Boote on guitar and vocals, Stephen Wallace on drums and Chris Large on double bass, these guys certainly know how to entertain and are always nothing less than brilliant.

### **Ukes Aloud AMC Stage 8pm**

Lead by Andy Townsend, this ukulele ensemble will be playing a set of lively songs with audience participation positively encouraged, followed by a uke workshop. If you've ever wanted to learn the ukulele, this is a great starting point! A warm welcome, and light refreshments will be on offer.



### **SLUG Bridge Inn 8.30pm**

Zeke (Ray Jackson MBE) and his band of merry men make their way back to Audlem playing their own unique versions of songs from the past 50 years. Their ever exuberant front man likes to take the show into the crowd, and they are always very entertaining.



### **Slide Boy Roy Shroppie Fly 8.30pm**

This electrifying four piece band make their festival debut, playing a selection of classic and contemporary Blues/RnB and Rock'n;Roll. Expect a lively, authentic and well executed performance, delivered with good humour and fun.

## MONDAY 28th MAY



### **Callum Wright Bridge Stage 12.30pm**

Born and raised in Cheshire, with great ambitions, and taking influence from artists such as John Mayer, Ed Sheeran and James Bay, we're glad to welcome back Callum. He writes from widely relatable perspectives and conveys emotion through a unique vocal tone and an expressive, intricate guitar style of his own.

### **Grant Sharkey Shroppie Stage 1pm**

A hard working, free thinking, DIY double bass playing troubadour, Grant has been writing and touring non stop for over a decade now, and has released 18 studio albums, written books and recently debuted his musical 'Are You Worthy?'. He is a truly unique performer, mixing music, comedy and chaos to great effect, his shows are always funny and insightful, thought provoking and engaging. Do go and check him out.

## MONDAY 28th MAY continued



### **Lydia O'Dowd Band Bridge Stage 2pm**

Lydia and her band have been busy enchanting audiences with their lilting style. The perfect soundtrack to a bank holiday afternoon, this accomplished trio (Tim on piano and his brother Paul on second guitar, with Lydia on vocals and guitar) will be playing a mix of covers and originals for your enjoyment.



### **Katie O'Malley Shroppie Stage 2.30pm**

A voice that pours with emotion and fills venues, Katie O'Malley and her hip-swaying Americana band have played across the UK. Hailing from Manchester and proud northerners, they describe their sound as a mix of Americana, Blues & Rock, evoking the great Janis Joplin's Big Brother & The Holding Company.



### **Gemma Rose AMC Stage 3.30pm**

Making her festival debut, Gemma has bags of talent & experience. With an extensive repertoire to draw upon, she is capable of delivering anything from soft tender ballads to belting party hits. Covering artists from the 1960s to the present day, there will be something for everybody in her performance.



### **Jim Kirkpatrick Band 3.50 Bridge Stage**

Well known Blues guitarist and songwriter Jim Kirkpatrick returns to the festival with his power house band. With a career that has seen him play all over the world, he is currently in the hugely successful band FM, and has also played with Bernie Marsden of Whitesnake and Thea Gilmore, among many others. A genuine world class Bluesman who will no doubt give us another great show.



### **The Good Habits Shroppie Stage 4.30pm**

A spirited, talented and very likeable three piece from Stoke, this band have been keeping busy and we are fortunate to get them on the bill, such is the demand they are in! Delivering their own masterly versions of Reggae, Ska, Blues and Funk classics, their music gifts infectious joy to all within earshot, their sound is irresistible, and we're hopeful that they are destined to become festival regulars!



### **SkaBurst Bridge Stage 6pm**

There is something about Ska music that just makes you want to dance with a massive smile on your face, and this 6 piece band from Shropshire will definitely get you movin' and a'groovin'. With their effortlessly delivered set including all the Trojan and 2Tone Ska classics, and some Ska'd up classics to boot, we are sure that their Audlem Festival debut will be a highlight enjoyed by all.



### **Brass Monkees Shroppie Stage 6.30pm**

Totally electric 9 piece band featuring a three piece brass section, male and female vocals, guitar, bass, keys and drums, delivering a repertoire drawing from classic Soul, Funk, RnB and Motown, this super group are a tour de force, and play something for everyone in their lively, action-packed set.



### **Twin Frets Bridge Inn 8.30pm**

Willy Fluss and Vernon Fuller are Twin Frets, a very experienced electric guitar & vocals duo making a welcome return. They have supported high profile events featuring soul legend Geno Washington, and the Royal Philharmonic Orchestra. Two outstanding guitarists playing familiar Jazz, Soul, Reggae and Rhythm and Blues classics.



### **Tony Skeggs Shroppie Fly 8.30pm**

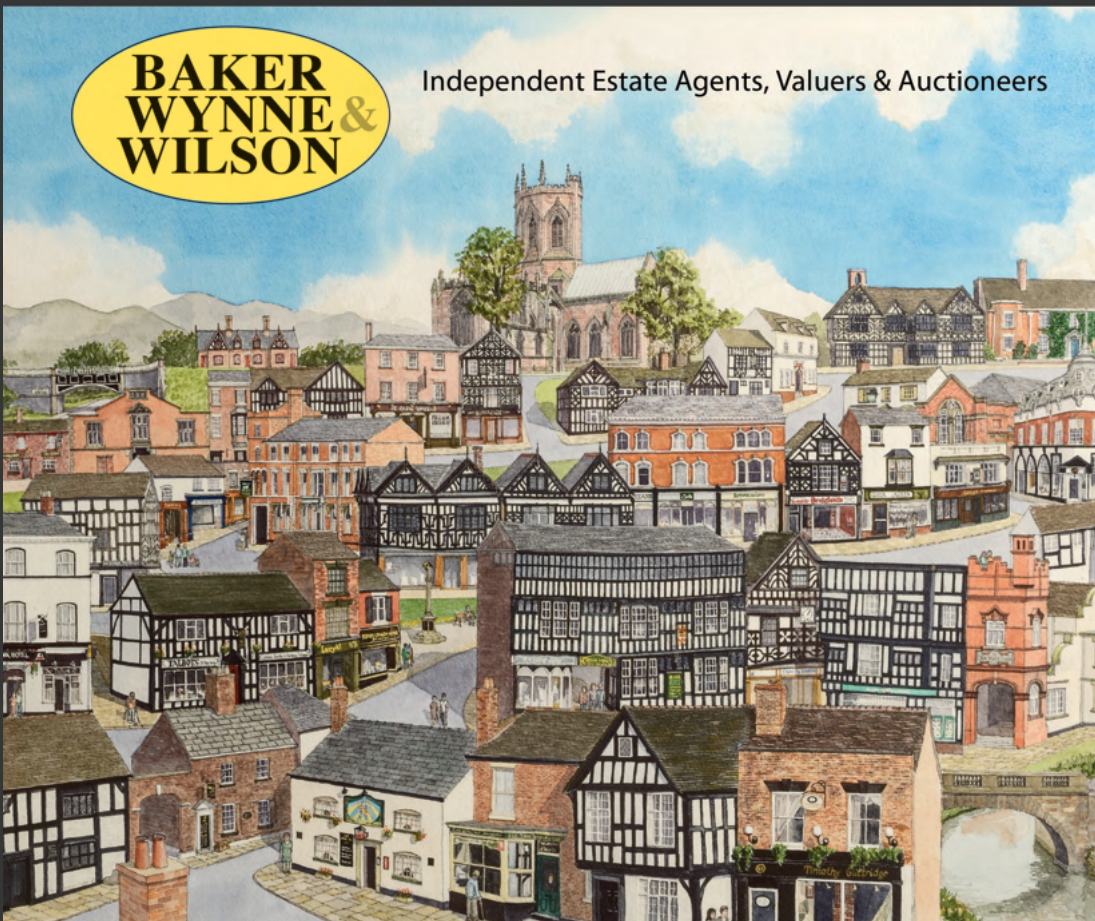
Probably the closest we'll ever get to having a Beatle in Audlem! Tony is a fantastic musician and all round great guy. As a resident performer at Liverpool's Cavern club, he certainly knows how to put on a brilliant performance, and with a huge repertoire of classic songs including Dylan, Beatles, Simon & Garfunkel, Rod Stewart, Squeeze and many more, he is the ultimate one man show.



A proper local firm with national connections  
Striving to deliver the best result in every situation

**BAKER  
WYNNE &  
WILSON**

Independent Estate Agents, Valuers & Auctioneers



38 Pepper Street, Nantwich, Cheshire CW5 5AB

**Tel: 01270 625214**

**[www.bakerwynneandwilson.com](http://www.bakerwynneandwilson.com)**

email: [info@bakerwynneandwilson.com](mailto:info@bakerwynneandwilson.com)

# Art Photography & Makers' Market Line-up



**Audlem Public Hall**



**Saturday 27th &  
Sunday 28th May**



**10am-5pm Both  
Days**

## *MAKERS*

---

Applestump Records  
Hankelow Honey  
Sunbeam Naturals  
Drink Or Draw  
Wrenbury Cider  
Ma Baker Bakes  
Bobbins & Bows  
Midena  
Bourne's Cheese  
Nantwich Gin  
Copperlode  
Bradwall Bakery  
Sarah Elizabeth Anne  
Grace Finneren  
Katherine Laird  
Sylvia Davies Cards  
Croc's The Vinyl Cut

## *EXHIBITORS*

---

Adrian Cope (Art)  
Craft Chat + Spinning Wheel  
Demonstrations  
Judy Naden (Photography)  
Craig Hitchen (Art)  
Emily Hardy (Photography)  
Loz Sandom (Art)  
Steph McPhillips (Digital Art)  
Audlem Art Club  
Gig Junkie (Photography)  
Wendy Jordan



SCAN ME

# PERSONALISED ITEMS4U.CO.UK

Sometimes it's not easy buying a friend or loved one a gift, but maybe we can help. Personalising a gift shows you care because you have chosen something unique to that person.

Baby/Child  
Homeware  
Kitchenware  
Sports & Workwear  
T-Shirts  
Polo Shirts  
Fleeces  
Hand painted bottles with lights  
Mugs  
Bags  
Toys  
Hand knitted gifts  
Jigsaws and loads more



*From t-shirts to birthday mugs,  
we like to think we have  
something for everyone*



## ONLINE SHOPPING

Buy online at

[www.personaliseditems4u.co.uk](http://www.personaliseditems4u.co.uk)



Audlem  
Playing  
Fields



Shroppie  
Stage



Arts  
Venue



Local shops and  
amenities



Bridge  
Stage



Local shops and  
amenities



ATM

Local shops and  
amenities



AMC  
Stage



Vehicle  
Access



Pedestrian  
Access



audlem  
music & arts  
**FESTIVAL**  
Site Map

# audlem music & arts FESTIVAL

We have some high quality T-shirts available to buy from The Public Hall over the Saturday and Sunday, and also via the shop on our website [audlemfestival.live](http://audlemfestival.live)



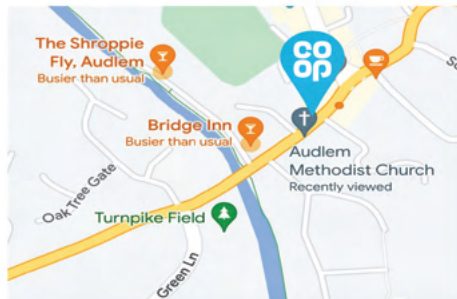
Food

Your Local Co-op

Shropshire Street

Open every day: 7am-10pm

Shropshire Street, Audlem  
Crewe, CW3 0DX



Bakery

ATM

Cash Machine



Health Lottery



National Lottery

nus

NUS Extra  
card accepted

PP  
PayPoint

PayPoint

Become a member  
today



# The Flower Divas

BY SAMANTHA BURDON



---

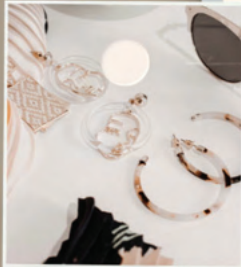
The Flower Divas

9 Shropshire Street Audlem Cheshire CW3 0AE





*Accessories*



*Jewellery*

Hi I'm  
Sam Burdon



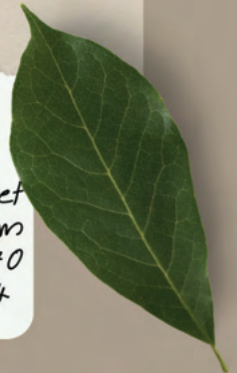
*About Me*

I'm really keen on supporting British  
lead products, I sell brands that are  
made & designed in the UK.  
Marble, Brakeburn, Laura Sherratt,  
Louise Tiller  
& much more

*Boutique and Blooms*

Your local fashion boutique and flower  
shop all under one roof, which makes  
shopping for gifts easier then ever before.

9 Shropshire Street  
Audlem  
01270  
812434





## Garage Technical Services

Diagnostics Servicing Repairs MOT Prep  
Glow Plug & Injector Solutions

Unit 4-5A Tech Court,  
Lancaster Fields, Crewe CW1 6FF



01270 255 838



[gtscrewe@aol.com](mailto:gtscrewe@aol.com)





# Graham Tresidder & Son

CREWE & NANTWICH FUNERAL SERVICES

Independent Family Funeral Directors | SINCE 1977



An individual caring & professional 24 hour service

62 Hospital Street  
Nantwich  
CW5 5RP

448 Crewe Road  
Wistaston, Crewe  
CW2 6PZ

The Square  
Audlem  
CW3 0AB

Golden Charter   
Smart Planning for Later Life



[www.nantwichfuneralservices.co.uk](http://www.nantwichfuneralservices.co.uk) | 01270 812512

**D. R. JONES**  
**01270 812368**

**General Builder**  
**Construction**  
**Groundwork**  
**Mini Digger Hire**



TRADITIONAL ~ MODERN ~ INDIVIDUAL



# OWENS MEMORIALS

of  
MARKET DRAYTON



- 40 Years In Business
- Granite Stone Slate Marble
- Wide Range Of Colours
- Personalised Lettering
- All Areas
- Qualified Craftsmen



*Quality in Granite, Marble  
and all Natural Stone*



**Tel: 01630 654135**

21, Queen Street MARKET DRAYTON TF9 1PS

Our Showrooms are open:

Mon/Wed/Fri: 9am - 5pm  
Tues/Thurs/Sat: 9am - 1pm



**Brittany Wright**

**Hairdresser**

07528 992 700

# **AUDLEM DRY CLEANERS**

*"A Family Run Business"*

**LAUNDRY, REPAIRS AND  
ALTERATIONS**

16, The Square

Audlem

CW3 0AD

**01270 811 593**

# **Norman Huntbach**

Agrochemical Advice

Supply and Application

Combining

Land Drainage

Land Required for Cropping

**T: 0771 116 5763**

**E: [norman@huntbach.com](mailto:norman@huntbach.com)**



*THE VILLAGE*

**Chippy**

**AUDLEM**

*Traditional Fish & Chips*

13a Cheshire Street

Audlem

Cheshire

CW3 0AH

01270 811777

# shades of Green spring's into summer!

All aspects of  
garden maintenance

Service available in  
Audlem and surrounding  
areas



Call or text Paul on  
07856 669 220

Annabel  
Thornton  
BA, SWA, ASEA  
Artist

Daisy's Gallery, Audlem

[www.annabelthornton.co.uk](http://www.annabelthornton.co.uk)

07903224348

01270 812368

[annabelthornton@aol.com](mailto:annabelthornton@aol.com)

 @annabelartist



OPENING HOURS:

TUESDAY TO SATURDAY: 9.30-4PM

SUNDAYS: 10-3PM

*Serving Hot & Cold Drinks, Homemade*

*Cakes, Breakfasts & Light Lunches*

11e Cheshire Street, Audlem, CW3 0AH

Tel: 01270 910835





# SOLAR STRUCTURES

MODULAR SOLAR SYSTEMS

**Solar Structures Ltd Supply Domestic, Commercial, Industrial, and Leisure Sectors with Solar Solutions to Achieve Carbon Neutral Homes and Sites.**



- ◆ Beat Energy Price Increases
- ◆ Produce Your Own Energy
- ◆ Battery Store Energy For When You Need It
- ◆ Backup Power For Potential Rationing
- ◆ Create Extra Power To Suit Your Demands

**Solar Systems for Domestic, Commercial, Industrial, Solar Fields, Car Park Structures & Modular homes**

[www.solarstructures.co.uk](http://www.solarstructures.co.uk)

Adam Smallwood - [adam@solarstructures.co.uk](mailto:adam@solarstructures.co.uk) - 01270 812653

Wales - Matthew Fogg - [matthew@solarstructures.co.uk](mailto:matthew@solarstructures.co.uk) - 07368 552260

South West - Russell Port - [russell@solarstructures.co.uk](mailto:russell@solarstructures.co.uk) - 07923 142457

East Anglia and Essex - Andrew Hird - Next Phase Leisure - [andrew@nextphaseleisure.co.uk](mailto:andrew@nextphaseleisure.co.uk) - 01263 576033

Solar Structures Ltd | Coole Lane | Coole Pilate | Nantwich | CW5 8AU



# spg

**Supplying and installing perimeter security solutions nationwide, for over 20 years**

**Proud to support Audlem Music Festival**

**'Eliminating business theft one site at a time'**



**T 01270 811291 - M 07980 893072**

**E [simong@spgsecuritysystems.co.uk](mailto:simong@spgsecuritysystems.co.uk)**

**W [www.spgsecuritysystems.co.uk](http://www.spgsecuritysystems.co.uk)**

# Oxley's

## Funeral Services

9 Shropshire Street, Audlem, Cheshire CW3 0AE

Since 1858 we have been a family owned business, that takes pride in providing a professional and caring service to bereaved families in the Audlem, Nantwich & Crewe area.

Oxley's, in conjunction with Golden Leaves Funeral Plans, are able to arrange for you to Pre-plan your funeral. Funeral Planning relieves your loved ones of stress at a vulnerable time.

Oxley's staff are dedicated to providing you with the help and guidance you need to give you and your family peace of mind knowing your wishes will be carried out.



Cynthia Murray  
Oxley's Audlem Representative

01270 812 331 (24 hours)  
cynthia@oxleysfuneralservices.co.uk  
www.oxleysfuneralservices.co.uk

## GET AWAY FROM IT ALL . . .

## GET ON A CANAL BOAT



**Spend a memorable day** exploring the beautiful Shropshire Union Canal aboard our self-drive day boat.  
**Fancy a longer break?** Head to Llangollen, Chester or Anderton aboard one of our comfortable 2-8 berth narrowboats. All our boats come fully equipped with everything you will need, and pets are welcome, free of charge.

**Learn the Ropes** - enrol on one of our friendly, informal Boat Handling courses.

**For Boat Owners** - BSS Examinations and remedial work carried out by our Gas Safe Registered engineer, engine servicing and repairs. Emergency call out service.

**We are based at Overwater Marina, Coole Lane, Audlem CW5 8AY.** Do drop in and see us.

[www.cheshirecatnarrowboats.co.uk](http://www.cheshirecatnarrowboats.co.uk)  
Tel: 07867 790195 or 07970 384047





# Beautiful 6-bedroom villa

This beautiful villa on the Costa Blanca coast, Spain, is available to rent  
Already fully booked for summer 2023  
Please visit [www.morairaholidayhome.com](http://www.morairaholidayhome.com)



**Holiday rental only**



**6 Bedrooms**



**4 Bathrooms**



**AC in every room**



**Swimming pool**



# THE BRIDGE INN

## Audlem

01270 812928

Proud to be a Main Sponsor of the  
Audlem Music & Arts Festival

- Home Cooked Food Served Wednesday - Monday
  - Breakfast Served  
Wednesday - Sunday 8.30-10.30am
- All Meat Sourced Locally from Oxtail & Trotter
  - Great Selection of Cask Ales,  
Wines and Spirits
- Regular Quiz and Live Music Nights
- Pool Table and Darts Available





# ARE YOU A REGULAR HIRER?

*Shared Ownership with BCBM could really work for you. It makes such good financial sense because you own a percentage of your boat and that means you only contribute that same percentage towards the running costs.*

*Shares from £1,500 up to £14,000 in a wide choice of boats, giving you 4 weeks holiday every year.*

## QUALITY BOATS FOR SHARED OWNERSHIP



*Taking  
deposits for  
Silken Mist,  
new for  
2023*



01270 811 500

PROUD MEMBER OF  
**BRITISH MARINE**  
LEADING THE INDUSTRY



[bcbm.co.uk](http://bcbm.co.uk)



**EPS BARBERS**

*Audlem*

6B Shropshire Street

Audlem CW3 0AS

01270 811033

epsbarbers.booksy.com



**BRAMBLES**



COOKSHOP

• HOME • KITCHEN • GIFT •



• LE CREUSET • SOPHIE ALLPORT •  
• EMMA BRIDGEWATER •  
SAM WILSON • KITCHENAID •

WWW.BRAMBLES COOKSHOP.COM



AUDLEM, CHESHIRE, CW3 0DL  
01270 811 925



/NFO@BRAMBLES COOKSHOP.COM

**AUDLEM**



**PARTY ON THE PARK**

**SATURDAY 1ST JULY**

**2023**

**24 YEARS**



[www.audlem-aset.org](http://www.audlem-aset.org)

# **TONY SEABRIDGE**

**GROUND MAINTENANCE**

***Repairs and Sales  
of all garden  
equipment***

***Established over 30 years***

**07805 782779**  
**tonyseabridge@btinternet.com**

Unit 7  
Meadow Lane Farm Business Park  
London Road, Stapeley  
Nantwich CW5 7JU

*Katy Goodwin*

**Mobile Reflexology  
and  
Indian Head Massage**

**01270 812863**

**07814 373986**

**kategoodwin243@gmail.com**



Williams of Audlem

**WILLIAMS of AUDLEM**  
EST 1862  
**MANCHESTER HOUSE**  
**1 SHROPSHIRE ST.**  
**AUDLEM**  
**CW3 0AG**

**TEL: 01270 811210**

**OPEN EVERY DAY FROM 5:45AM**  
**(EXCEPT CHRISTMAS DAY)**

**FOR:**

**NEWSPAPERS & MAGAZINES,**

**CARDS & GIFTS,**

**COAL & STICKS,**

**HOUSEHOLD & DIY BASICS, etc.**

Picture © Ronnie Cruwys  
[www.drawingthestreet.co.uk](http://www.drawingthestreet.co.uk)



***Ian F Reynolds***

***Chimney Sweep***

***Audlem***

**07593 444882**

# Luxury Tipi's & Stretch Tent Hire in Cheshire

A perfect solution for all types of events from weddings, birthdays, festivals, charity events, corporate events and everything in between.

With a personal touch, we will help you plan your event from start to finish, all year round, whether it's a cosy winter function or a gorgeous summer's day celebration!



01270 845 941

[cheshiretipicompany.co.uk](http://cheshiretipicompany.co.uk)



**CHESHIRE**  
STRETCH TENTS LTD

John: 07952 385 861

Zoe: 07780 438 485

[cheshirestretchtentsltd.co.uk](http://cheshirestretchtentsltd.co.uk)



**LUXURY TIPI'S**



**STRETCH TENTS**

# THELWELL CONTRACTORS

Low Loader and Flatbed Hire throughout  
the UK and Europe

✉ [thelwellcontractors@gmail.com](mailto:thelwellcontractors@gmail.com)

Tom 07917 824296

Sarah 07827 290377



Lodge Farm, Hatherton, Nantwich,  
Cheshire. CW5 7PG



# Lean On Me



Suicide Prevention  
Mental Health  
Safeguarding - LGBTQ+  
Anti Bullying  
Knife Crime Prevention  
School Issues and Advice  
Therapy  
Health and Wellbeing  
Drug and Alcohol Misuse  
Self-Harm

Contact Rachel on 07949 033 577



This advert is sponsored by  
**Audlem Carpet & Flooring**  
For all your flooring needs

Please call Mark on  
**07581 338 537**

# Cooles K9

Dog Grooming

Top House Farm  
Cooles Lane  
Cooles Pilate



**Beverley 07502 270 480**

# Leasepoint

Vehicle Leasing & Fleet Services

**Car and Van  
leasing for  
business and  
personal  
customers**



**Great value  
and service**



Leasepoint Vehicle Management Limited  
is authorised and regulated by the Financial Conduct Authority

 **BVRLA** Leasing Broker

**01270 620760**

**sales@leasepoint.co.uk** **www.leasepoint.co.uk**

**Leasepoint Vehicle Management Limited  
1 Macon Court, Herald Drive, Crewe, Cheshire, CW1 6EA**

Specialist 121 rehabilitation physiotherapy  
& support for children, adults and older people

# POSITIVE STEPS

PHYSIOTHERAPY

07801 238819 [lorna@positivestepsphysio.co.uk](mailto:lorna@positivestepsphysio.co.uk)

**For over 20 years Lorna and her team have  
been getting families back on their feet.**

We treat a wide range of children's and adult conditions  
with a positive approach focused on what 'can be done'.

hcpc health & care  
professions  
council



**"We believe that the children and young people  
we work with can achieve anything."**

**Specialists in Adult Neurological rehabilitation.**

**Cheshire • Staffordshire • Shropshire**

[www.positivestepsphysio.co.uk](http://www.positivestepsphysio.co.uk)



# Amanda Serif

Registered Nutritional  
Therapy Practitioner &  
Health Coach



Supporting busy women  
facing the challenges of  
day to day life such as

- weight gain
- fatigue
- lack of sleep
- stress
- perimenopause

Book your complementary  
call and find out how  
nutritional therapy can  
support you back to  
health and wellbeing.

 07342 879 901

[www.truefoodnutrition.uk](http://www.truefoodnutrition.uk)





# PREMIER AUTO DETAILING

Vehicle detailing, paint correction  
and ceramic coating specialist

Vehicle storage with on-site security



[matt@premierautodetailing.co.uk](mailto:matt@premierautodetailing.co.uk)



[premier\\_auto\\_detailing\\_storage](https://www.instagram.com/premier_auto_detailing_storage)



Premier auto detailing & auto  
storage



Mercedes-Benz

07780 550 803

[www.premierautodetailing.co.uk](http://www.premierautodetailing.co.uk)



ASTON MARTIN



BENTLEY



RANGE  
ROVER

# DRESSING ROOMS

SOFT FURNISHINGS & INTERIORS

We are a soft furnishings and interior design company based in the village of Audlem, Cheshire.

We offer the complete service from manufacturing high quality products to installation and after sales care.

Starting with a visit to your home, or if you prefer our showroom, where we can discuss options and ideas to suit your needs and budgets.

There is a wide range of fabrics, poles, wallpapers and accessories to help you make the right choice on design and colours to suit your individual taste.

We would love to work with you on any size of job from a roman blind to a full room makeover.



[www.dressingroomsofcheshire.co.uk](http://www.dressingroomsofcheshire.co.uk)

6 Shropshire Street, Audlem CW3 0DX

Bespoke curtains and pelmets

—  
All types of blinds and shutters

—  
Tracks and poles

—  
Free home appointments

—  
Full measure and fitting service

—  
Interior design service

—  
Mood boards



**DRESSING ROOMS**  
SOFT FURNISHINGS & INTERIORS

To book your free home consultation call 01270 811991  
Jane 07912 887778 or Allison 07900 888995

# *Rogers Masonry Ltd.*

**COVERING THE CHESHIRE AND NORTH SHROPSHIRE AREA  
BESPOKE AND HANDCRAFTED MEMORIALS FROM  
YOUR LOCAL MASON**

**All types of traditional and modern memorials  
available in  
Granite - Marble - Slate and Natural Stone**

- ❖ **Personal service**
- ❖ **Free friendly advice**
- ❖ **Competitive prices**
- ❖ **Home visits**
- ❖ **Colour brochure  
available upon  
request**

**Please contact:  
01270 624676  
73 Hospital Street  
Nantwich CW5 5RL**



[www.rogersmasonry.co.uk](http://www.rogersmasonry.co.uk)







# *3 Shires*

**Property Letting Agents**

## **“FROM FLATS TO FARMHOUSES “**

3 Shires Property have been letting and managing property throughout Staffordshire since 1996, renowned for quality, bespoke properties of high standards.

Mandi Evans who runs the business has a vast knowledge of the local areas, not only with regards to property, but also the local educational establishments and reputable businesses.

26 years experience of an ever changing market, advice is available to new investors (references available from existing clients) offering a turnkey service from sourcing of potential investment property to rental management.

Personal service, open all hours to tenants and landlords. Honesty and reliability, but above all 1st class management, which is the best you will find in a similar market today.



# *3 Shires*

**Property Letting Agents**

**T: 07879 892 869**

**E: [mandi@3shires.net](mailto:mandi@3shires.net) - [www.3shires.net](http://www.3shires.net)**

# FOX BODY REPAIRS

Rolls Royce / Bentley time served

*Julian (Fox) Adair*

**Accident Repair Vehicle Paint Service**

Audlem - South Cheshire

**07946 386731**

E: rockin.fox@hotmail.co.uk



**FREE ESTIMATES** - Insurance work undertaken

**From a Scratch to a Full Respray**

Tel: 07759 520 738

Email: [support@techmedia.org.uk](mailto:support@techmedia.org.uk)

# TechMEDIA

Technical Services In Your Area

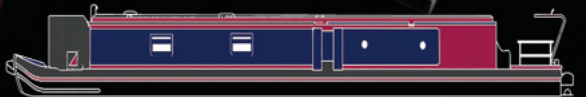
## Computer - Tech

- Sales & Repair Specialist
- Windows & Apple
- Laptops
- Desktops
- Cloud Backup
- Internet Solutions



## Narrowboat - Tech

- Solar Power Installation
- Onboard Wifi
- Mobile Broadband
- Electrical Systems
- Engine Servicing



Visit Audlem Mill  
to see ...

Gifts for all the family  
Ice cream (inc. dog ice cream!)

Canal ware, canal  
and railway books

Crafts, needlework, knitting  
and craft books

AUDLEM MILL

01270 811059

[www.audlemmill.co.uk](http://www.audlemmill.co.uk)



**AUDLEM PRINTERS**

01948 665920

[audlemprinters@gmail.com](mailto:audlemprinters@gmail.com)

[www.audlemprinters.co.uk](http://www.audlemprinters.co.uk)

Proud to print  
this years programme  
for the  
Audlem Music Festival

# J A ROBERTS

## BUILDING CONTRACTORS

*Providing all aspects of building and ground works*

07850 014 179 / 07568 151 909



# OverWater

*Moorings • Touring • Glamping*



**01270 812677**

**[www.overwatermarina.co.uk](http://www.overwatermarina.co.uk)**

**Coolle Lane Newhall CW5 8AY**